

Atmosphere

User Manual

Audio Wall Plate Accessories

A-XLR

Balanced Mic/
Line Input



A-RCA

Stereo Summed
dual RCA or
3.5mm TRS Input



A-BT

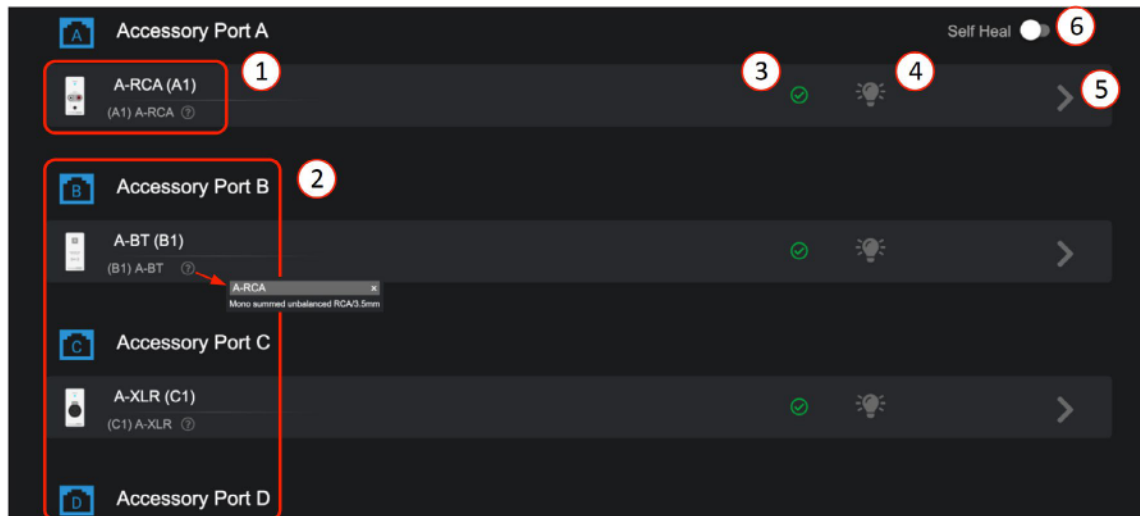
Bluetooth
Input



Audio Wall Plate Accessories that begin with an “A”, denoting that they are audio inputs, include:

A-XLR, A-RCA, and A-BT. Note: Only one audio input accessory can be connected to each bus-port (AZM4 has Ports A & B; AZM8 has Ports A,B,C,D). Once the Audio Wall Plate is connected to the AZM bus-port, the input associated with the bus-port will activate and can be selected as an input source where general settings can be configured. The general settings DSP available will be the same as source inputs.

To add an Audio accessory, begin by opening the Accessory tab and connect the accessory to a port that does not have another Audio accessory. When an audio wall plate accessory is connected to one of the 4 ports (AZM8), the device will show up on the respective port and display the type. When it becomes active, the indicator displays a green check mark (#3). It will then appear on the input source selection list in the Add Source popup configuration page.

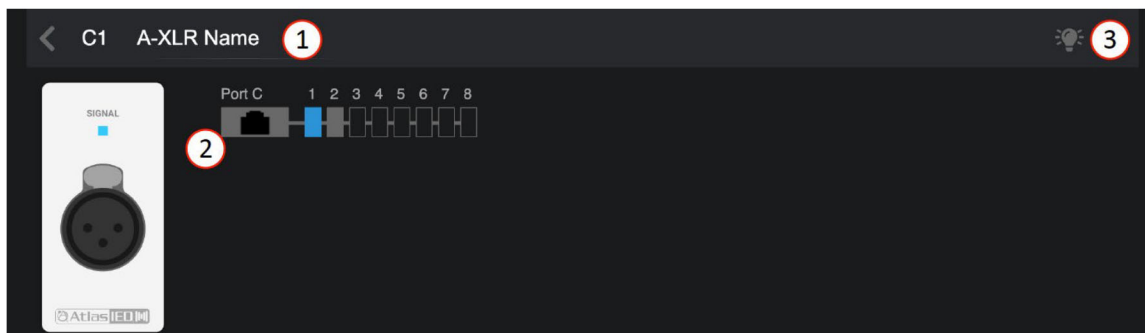


1. The accessory input ports remain unpopulated until an accessory is present and detected on the bus-port.
2. Once connected, like Port A, B & C, the port will light up and identify the accessory type. The top default name can be edited, the lower ID with type and port number, will not change. This is the accessory part number and not the same as the Input Source Name. Clicking on the “?” will show a description of the accessory type for reference.
3. After the accessory is recognized, a green check appears indicating it is updated and ready to use. Note: It can take up to 30 seconds for an audio wall plate to be detected and start streaming audio.
4. Click on this “Locate” icon to flash the LED on the accessory to aid in finding its physical location.
5. The “>” icon is the link to the accessory page. The accessory page allows editing of the name, shows the location of the accessory on the bus port, and in some cases, basic settings specific to the type of Audio wall plate. Go to Source General Settings to configure the audio settings.
6. After installing a system, switch on “Self-Heal” and the system will automatically retain the settings in the event a wall controller accessory requires replacement on a port. Simply remove the faulty unit and plug in the new; the system will recognize it and update the settings exactly as it was before. No additional programming will be required.

Atmosphere

User Manual

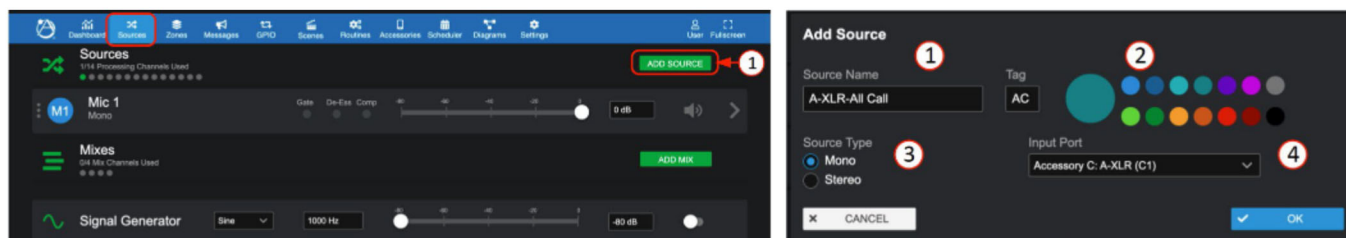
Audio Wall Plates A-XLR Settings on Accessory Page



1. The accessory settings page displays the editable accessory name. The default is type and port with location on bus.
2. Shows input graphic of accessory type, A-XLR, and port "C" with bus order location "1" (C1).
3. Click on this locate icon to flash the LED on the accessory to aid in finding its physical location.

Add Source for A-XLR on Input Source Page

1. Go to Source page and select Add Source to open the configuration popup.



1. Each input can be named here and will be added to the input source selection list system wide.
2. A letter or numeric tag and color can be selected to enhance visualization and help identify source types.
3. Inputs Sources can be Mono or Stereo, select here prior to assigning the input port.
4. Select the input port or, if stereo, input ports (left/right) from the drop-down list of available inputs and select OK to add the Source to the Sources List.

General Settings for A-XLR Source Page

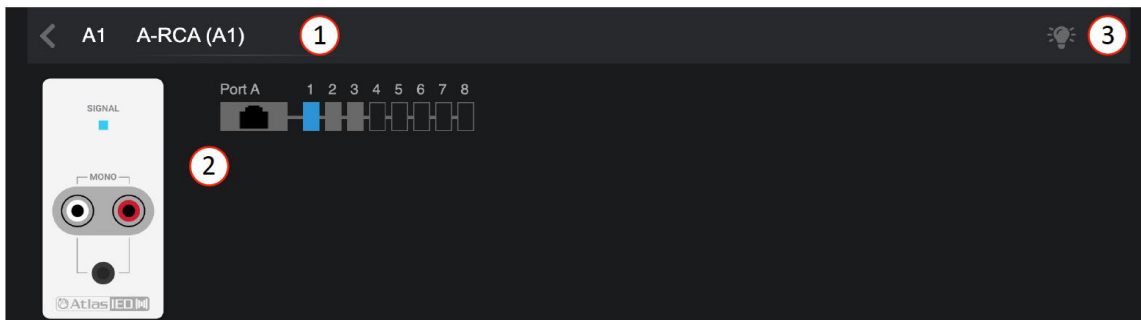


1. The General Settings page displays the editable Source Name, identifies physical location of input for wiring, and navigation tabs for DSP settings: Gate, De-Esser, Compressor, Equalizer, and Auto-Gain. (same as DSP on Mic/Line page above).
2. Shows input type and port name, select "Change Type or Ports" to re-configure if desired.
3. Pre-set High Pass Filter Enable – a separate EQ filter placed before the Gate, Compressor, and Equalizer, allowing all bands of the equalizer to be used for other requirements.
4. 0dB to +60 dB of preamp gain available to fine tune input sensitivity for Mic or Line sources.
5. Phantom Power Enable.
6. Delete source "X" and Mute Source along with source (input) level fader.

Atmosphere

User Manual

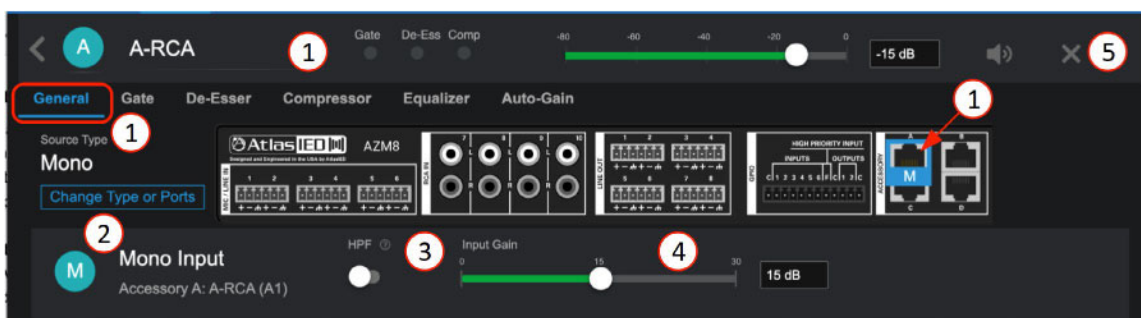
Audio Wall Plates A-RCA Settings on Accessory Page



1. The accessory settings page displays the editable accessory name. The default is type and port with location on bus.
2. Shows input graphic of accessory type, A-RCA, and port "A" with bus order location "1" (A1).
3. Click on this locate icon to flash the LED on the accessory to aid in finding its physical location.

Note: Follow the instructions above to "Add Source" to Input Source List for all audio accessories.

General Settings for A-RCA on Source Page

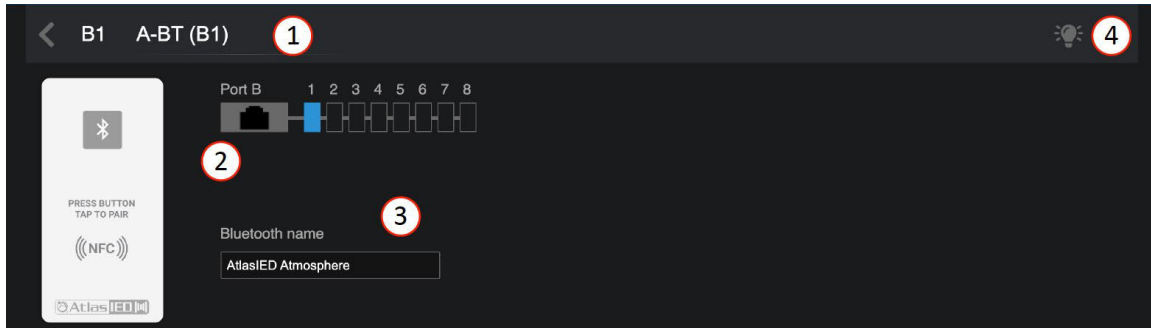


1. The General Settings page displays the editable Source Name, identifies physical location of input for wiring, and navigation tabs for DSP settings: Gate, De-Esser, Compressor, Equalizer, and Auto-Gain. (same as DSP on Mic/Line page above).
2. Shows input type and port name, select "Change Type or Ports" to re-configure if desired.
3. Pre-set High Pass Filter Enable – a separate EQ filter placed before the Gate, Compressor, and Equalizer, allowing all bands of the equalizer to be used for other requirements.
4. 0 - 30dB of gain available to fine tune input sensitivity.
5. Delete source "X" and Mute Source along with source (input) level fader.

Atmosphere

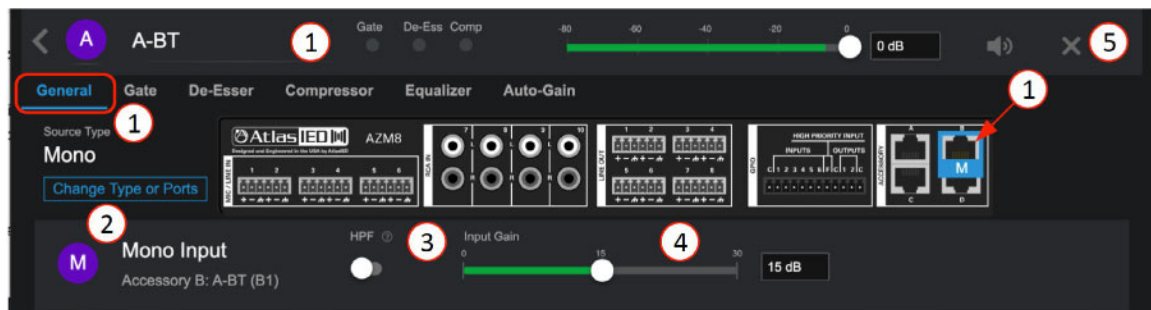
User Manual

Audio Wall Plates A-BT Settings on Accessory Page



1. The accessory settings page displays the editable accessory name. The default is type and port with location on bus.
2. Shows input graphic of accessory type, A-BT, and port "B" with bus order location "1" (B1).
3. Bluetooth® name - this is the editable name that will show up in your Bluetooth® mobile device connection list.
4. Click on this light icon to flash the LED on the accessory to aid in finding its physical location.

General Settings for A-BT on Source Page



1. The General Settings page displays the editable Source Name, identifies physical location of input for wiring, and navigation tabs for DSP settings: Gate, De-Esser, Compressor, Equalizer, and Auto-Gain. (same as DSP on Mic/Line page above).
2. Shows input type and port name, select "Change Type or Ports" to re-configure if desired.
3. Pre-set High Pass Filter Enable – a separate EQ filter placed before the Gate, Compressor, and Equalizer, allowing all bands of the equalizer to be used for other requirements.
4. 0 - 30dB of gain available to fine tune input sensitivity.
5. Delete source "X" and Mute Source along with source (input) level fader.

How to pair with the A-BT Wall Plate

1. **Using NFC** – Press the pairing button (1) and it will light blue.
 - a. With the mobile device Bluetooth® turned ON, tap your mobile device to the NFC symbol (2) on the A-BT.
 - b. A-BT indicator (#1) will turn green after connecting successfully.
2. **Manually** - Press the pairing button (1) and it will light blue.
 - a. Look in your mobile device Bluetooth® list and select the Bluetooth® "Name" you entered on the General Settings page.
 - b. When a connection is established, the LED will turn from green.
 - c. Pressing the pairing button (1) when connected, will disconnect the pairing.

Note: It will NOT auto-pair again, you must press the pairing button (1) or, tap NFC (2) again to initiate a connection.

